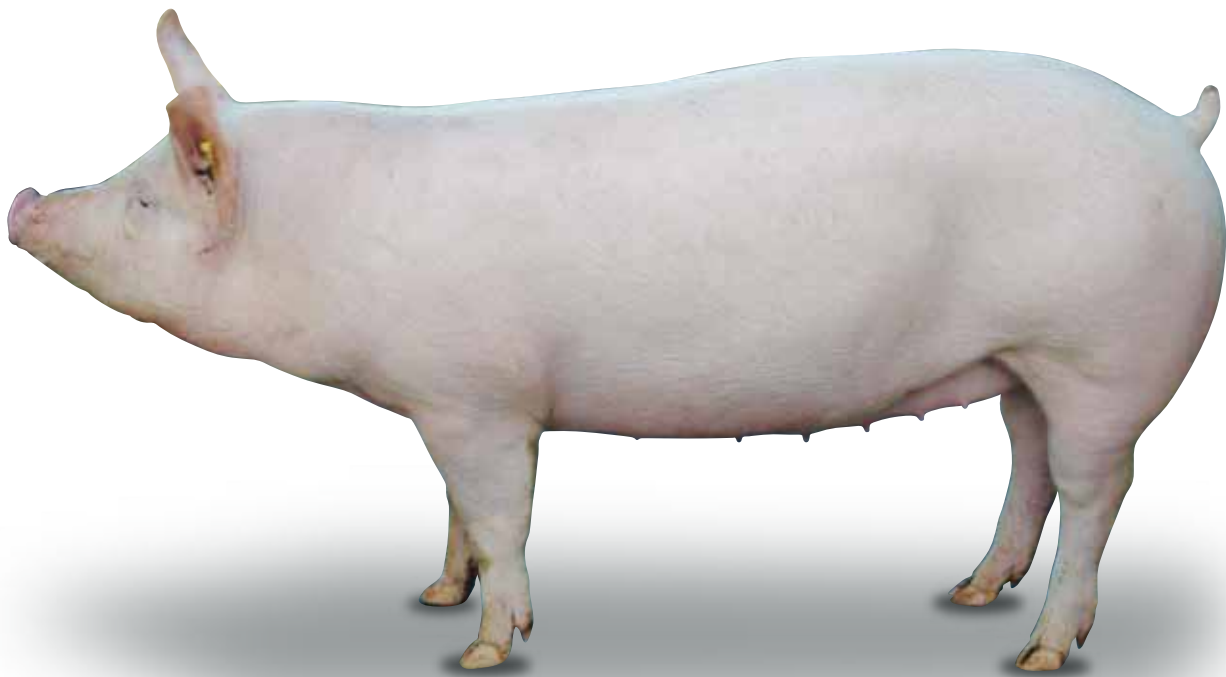


# Genepacker 90

The Genepacker 90 is a white indoor female used globally and is suitable for use with any sire. This genuine F1 sow ensures maximal heterosis to give exceptional breeding performance of large vigorous litters with good survivability to weaning. The balanced use of selection traits and indexes in our nucleus units has ensured good longevity with high survival through to parity 6, meaning lifetime productivity which far exceeds international competition.



## Commercial Performance

	GP90	UK Average*
Farrowing Rate (%)	96.5	80.3
Born Alive	14.6	11.4
Weaned	12.5	9.9
Pre Weaning Mortality (%)	14.6	12.4
Weaning Age	26.3	26.7
Pigs Weaned/Sow/Year	29.4	22.6

\* Taken from table 4.3 from BPEX Pig Yearbook 2012 page 45.

## Don't just take our word for it...

“The Genepacker 90 is extremely prolific and this, combined with a good appetite in the farrowing house enables her to keep producing lots of milk in turn allowing her to rear such a high number of piglets. The lifetime performance of the Genepacker 90 has been the foundation for our successful breeding business for over ten years. During this time her performance has steadily increased, providing us with higher numbers of strong, robust piglets, giving us confidence to continually expand and invest, even throughout challenging times.”

**Pete Batty**, R Wilson & Sons